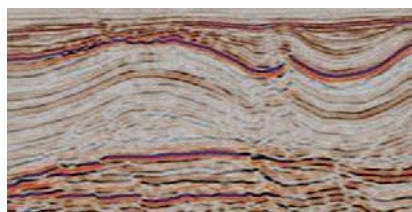
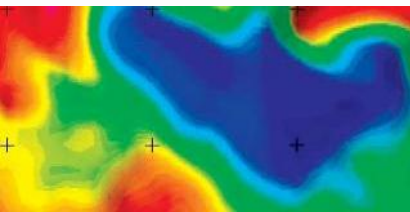
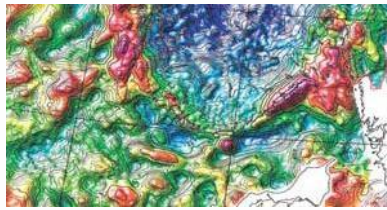




**AIRBORNE**  
Petroleum Geophysics



*Qualified for Success*



*APG's in-depth understanding of the needs of energy companies enables us to offer a start-to-finish customized service.*

## COMPANY OVERVIEW

**AIRBORNE PETROLEUM GEOPHYSICS LTD (APG)** provides specialized geophysical products and services to the oil and gas industry, the mineral exploration companies as well as to the water, engineering and environmental segments. The Managing partners and a group of consultants are utilizing the advanced GT-2A airborne gravity system (Canadian Micro Gravity Ltd) in conjunction with Gravimetric Technology based in Moscow. APG have combined forces with highly skilled and respected group of consultants to offer through APG a unique blend of operational, technical and interpretation skills based on decades of experience within the oil and gas and minerals industry. The APG team's in-depth understanding of the needs of energy companies enables it to offer a start-to-finish customized service which is based on addressing specific objectives and solving geotechnical problems.

**APG is uniquely a service provider, technical partner, data provider and consultancy involved in:**

- Proprietary and multi-client geophysical projects
- Gravity, magnetics, electromagnetics, radiometrics, remote sensing
- Airborne, land and marine survey operations
- Training courses plus technology transfer initiatives
- Seismic and non-seismic data interpretation studies
- Regional exploration with basin-wide reconnaissance surveys
- Prospect mapping with pre-seismic operations and block-specific surveys
- Risk mitigation studies using surveys to detect salt, shale, volcanic and igneous rocks
- Joint ventures



*APG is uniquely a service provider, technical partner, data provider and consultancy equipped with broad geotechnical expertise.*

## EXPLORATION PARTNERS

The use and interpretation of gravity, magnetic, and electromagnetic data is a specialized skill. Working side-by-side with exploration geoscientists as an Exploration Partner allows APG to better support the use of data by oil companies and ensure maximum interpretation value through:

- Gravity, magnetic, EM feasibility studies with fit-for-purpose modeling
- Survey design and technical parameter assessment
- Seismic and non-seismic data integration studies
- Resolving ambiguities in seismic data processing and interpretation
- Basin analysis: basin morphology, structure and depth
- Crustal thickness and source rock maturity studies

## RAISING THE STANDARD

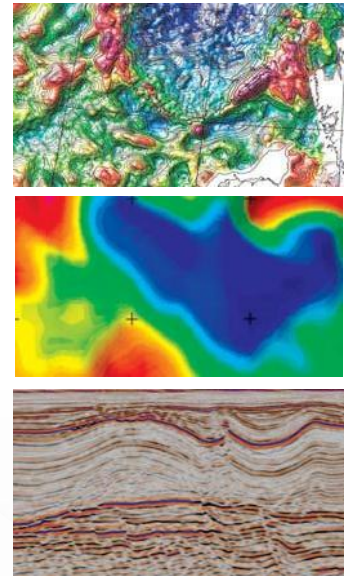
APG's unique **GT-2A** airborne gravimeters are the latest in the line of successful dynamic gravity systems designed and manufactured by the award-winning gravimetric technologists Yuri Smoller (Chief Engineer) and Sam Jurist (Chief Scientist). These distinguished scientists received Russia's top award for science and engineering from Boris Yeltsin in 1995 for their work in mobile gravimetry. The GT-2A, introduced in 2008, is based on 7 years of operational experience with its successful predecessor, the GT-1A.

*“With a proven record for quality and reliability, and with consistent performance and fully automatic operations for mobile gravimetric measurements, the GT-2A is truly state-of-the-art technology.”*

The GT-2A has significant enhancements, including increased sensitivity and a wider dynamic range which allows more precise measurements and reliable performance in periods of high turbulence. The GT-2A offers:

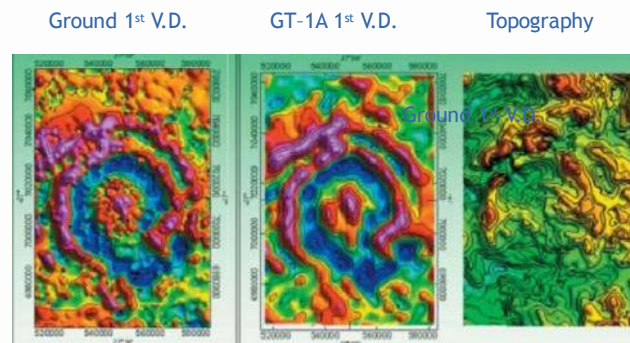
- Aircraft-independent operations
- Fully automated recording
- In-field Quality Control
- In-field production of preliminary free-air gravity maps

Data collected by the GT-2A is monitored daily for adherence to strict internationally recognized QC standards for airborne gravity measurements. In-field QC is fundamental to delivering the highest fidelity data. APG implements a dedicated “open door” Quality Control procedure on all of its projects by utilizing independent QC specialists and an array of data QC indicators.

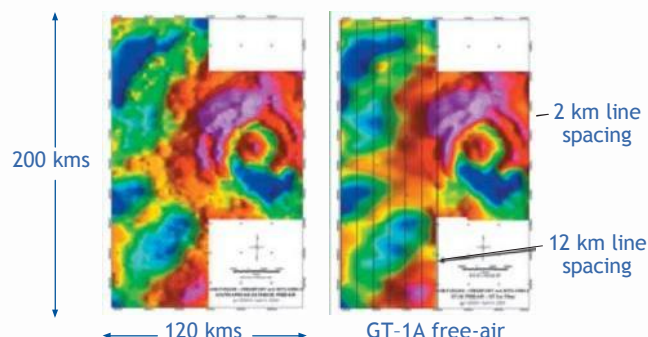


## AIRBORNE GRAVITY SURVEY

Vredefort Dome,  
South Africa  
Fixed-wing GT-1A Survey  
First Vertical Derivative

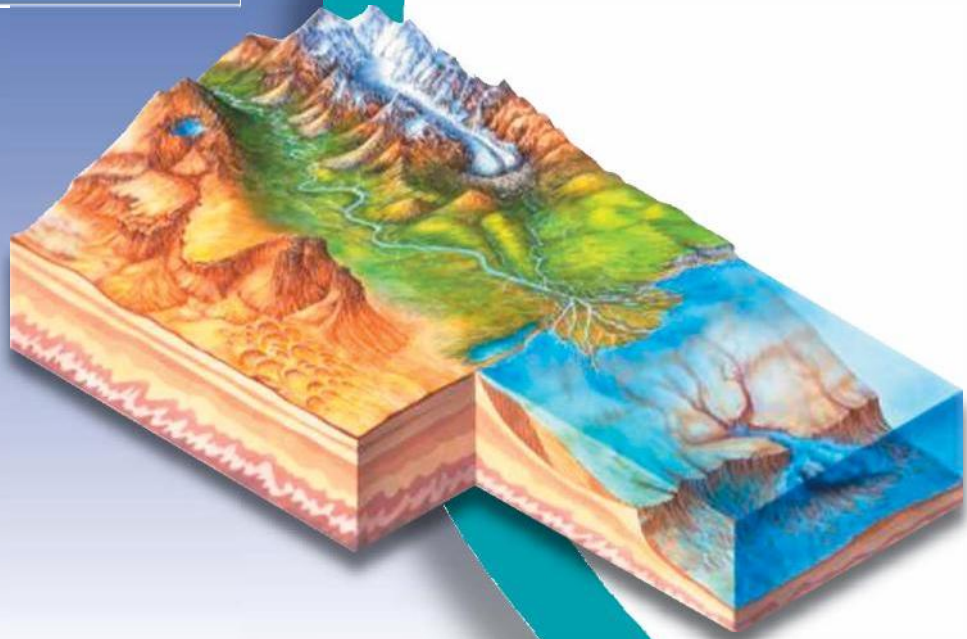


Vredefort Dome,  
South Africa  
Fixed-wing GT-1A Survey  
Free-air Gravity



## DO YOU HAVE ANY QUESTIONS

- Seismic, gravity, magnetic, or EM data?
- Vertical gravity meter Vs. gravity gradiometry?
- Can I resolve my target structure?
- What acquisition parameters should I use?
- How can I optimize my seismic budget?



### CONTACT US

Airborne Petroleum Geophysics Limited  
Unit E1 333 Noorduyn Park  
Springbank Airport  
Calgary, Alberta, Canada T3Z 3S7

Tel: +1 (403) 471.4433

Fax: +1 (403) 274.3951

Email: [info@apgeophysics.com](mailto:info@apgeophysics.com)

For online support, visit [www.apgeophysics.com](http://www.apgeophysics.com)

Denver | Perth | Calgary | Bangalore | Singapore

### INDEPENDENT CONSULTATION

For an independent consultation, contact AGP directly and you will be supplied a selection of consultants familiar with APG's data and history and quality.

### INDEPENDENT SYSTEMS VERIFICATION

For an expert, accurate and impartial view of the APG GT-series gravity systems, APG is pleased to refer you to an independent Quality Control specialist who has analyzed data for a number of oil companies.

### HSE STATEMENT

APG recognizes its moral and legal responsibility to provide a safe and healthy working environment for its employees, contractors, and subcontractors and for its community. APG operates under authorized HSE policy worldwide.

### AFFILIATIONS



Accredited and Certified Member of International Airborne Geophysics Safety Association (IAGSA)

Corporate Member of Society of Exploration Geophysicists (SEG)